

In comparison, *pudicus* may be said to have a black abdomen with yellow markings and *cursim* a yellow abdomen with black markings. The wing picture of *cursim* is as irregular as that of *delicatulus* and lighter coloured, while that of *pudicus* is dark and well defined.

THREE NEW SPECIES OF ODONATA.*

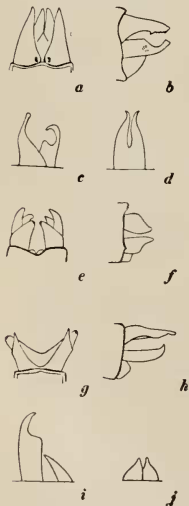
BY HORTENSE BUTLER, ITHACA, N. Y.

This paper contains the descriptions of three new species of dragonflies which were found while working over the material in the Cornell University collection, in the course of the preparation of a handbook of North American dragonflies.

Ophiogomphus sequoiarum, n. sp.

Total length ♂, 49 mm.; abdomen 34 mm.; hind wing 29 mm.

Total length ♀, 51 mm.; abdomen 34 mm.; hind wing 29 mm.



a-d—*Ophiogomphus sequoiarum*.
e-f—*Nehalennia carlotta*.
g-j—*Gomphus additus*.

Face and occiput yellowish green, vertex dark brown, with paler transverse oval spot. Prothorax brown, with double median yellow spot on dorsum. Thorax olive green; on the dorsum a moderate stripe of dark brown, contracted on the collar; humeral and antehumeral stripes of dark brown, confluent above, with a narrow dividing line of olive green. Sides of thorax olive green, with a very narrow brown line on the last suture. Abdomen brownish, with hastate yellowish spots on dorsum of segments 1-9; dorsum of segment 10 more broadly yellow; sides of segments 1 and 2 inferiorly yellow, including the auricles; 8 and 9 also yellowish, excepting extreme margin of 8 apically. Legs dark brown, basal three-fourths of femora yellowish and studded with short, dark spines. Appendages yellowish (figs. a and b). Wings hyaline, costa indistinctly paler, stigma black.

Female much like male, dorsum of the abdomen more broadly yellowish.

Male holotype, Three Rivers, Giant Forest, Tulare Co., Calif. 800-6500 ft., 16th July, 1907; collected by Dr. J. C. Bradley; now in the Cornell University collection. Female allotype from Sonoma Co., Calif., and a male paratype from the same place, both in the Cornell University collection. There are also paratypes of both sexes in the Museum of the Brooklyn Institute of Arts and Sciences.

***Nehalennia carlotta*, n. sp.**

Total length ♂, 24 mm., abdomen 19 mm., hind wing 14 mm. Total length ♀, 28 mm., abdomen 21 mm., hind wing 17 mm.

Face pale with a narrow transverse brown stripe on the base of the labrum, and a similar broader stripe on the clypeus; vertex and occiput metallic bluish green, rear of occiput yellow. Dorsum of prothorax and thorax metallic bluish green, pale beneath, sutures and carinae brown. Abdomen metallic bluish green on dorsum, pale beneath. The metallic green is abbreviated and bilobed on segment 8, and reduced to paired triangular basal spots on 9 and 10. Legs pale, dark line exteriorly on femora and tibiae. Appendages (figs. e and f) light brown. Wings hyaline, stigma light yellowish, .5 mm. long, surmounting one cell. Colouring of female similar, but somewhat paler, the metallic bluish green on the terminal segments is less abbreviated.

Male holotype, female allotype, and several paratypes of both sexes, Saranac Inn, N. Y., July, 1900, collected by Dr. J. G. Needham; in the Cornell University collection.

This is the species referred to in Bulletin 68 of the New York State Museum, pp. 218, 249 and 250, as *Nehalennia gracilis*. A closer examination of the material and a comparison with the figures in Dr. Calvert's recent papers on the species of *Nehalennia* (Ent. News, Vol. XXIV, pp. 310-316, 373-374) prove this to be a new species.

***Gomphus abditus*, n. sp.**

Total length ♂, 47 mm.; abdomen 33 mm.; hind wing 29. Total length ♀, 49 mm.; abdomen 36 mm.; hind wing 32 mm.

Face, occiput and vertex yellow, labrum narrowly bordered with brown, clypeus and middle portion of frons obscurely washed with brown. Prothorax brown with an irregular yellow median

line on dorsum. Thorax brown, marked with yellow as follows; A narrow line on the carina, extended laterally and dilated on the collar; a pair of dorsal stripes rounded above, more pointed at their divergent lower ends; a narrow isolated curved antehumeral stripe and a broad mid-lateral stripe, invaded by a narrow strip of brown extending upward before the stigma; yellow underneath. Abdomen dark brown, with hastate yellow basal spots on dorsum of segments 1-9. Segment 10 light brown, without markings. Sides of segments 1 and 2 wholly yellow, including the auricles; 8 and 9 also yellow, excepting the apical margins. Legs dark brown, paler basally; basal three-fourths of femora yellowish. Appendages (figs. g and h) light brown. Wings hyaline, extreme base indistinctly yellowish; stigma yellowish with brown veins, 3.5 mm. long.

Female similar in colouring; brown markings on the thorax broader; hind margin of occiput nearly straight, entirely hairy. On the male it is bare, except at the ends.

Male holotype, Chicopee, Mass., 20th June; female allotype of same place and date; both in the Cornell University Collection.

ENTOMOLOGICAL SOCIETY OF ONTARIO— ANNUAL MEETING.

The Fifty-first Annual Meeting of the Entomological Society of Ontario will be held at Toronto on Thursday and Friday, Nov. 5 and 6.

There will be a meeting of the Council on Thursday, at 11 a.m., in the University Biological Building, and at 2 p.m. the regular meetings will commence in the lecture-room of the Canadian Institute, 128 College St. A lantern will be available for those who wish to illustrate their papers with slides.

The Society is fortunate in having obtained the services of Prof. J. H. Comstock, of Cornell University, to deliver the public lecture, which will be given on Thursday evening in the Biological Building. His subject will be "The Habits of Spiders," and will be illustrated by lantern slides from Prof. Comstock's own photographs.